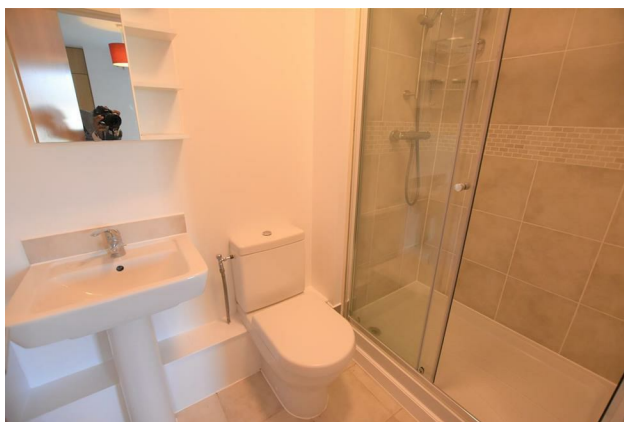


### 35 Park Lodge Avenue, West Drayton, UB7 9FJ



- Parkwest
- En-suite
- Concierge service
- Available NOW
- Larger than average two bedroom apartment
- Access to free gym
- Furnished
- EPC Rating - C

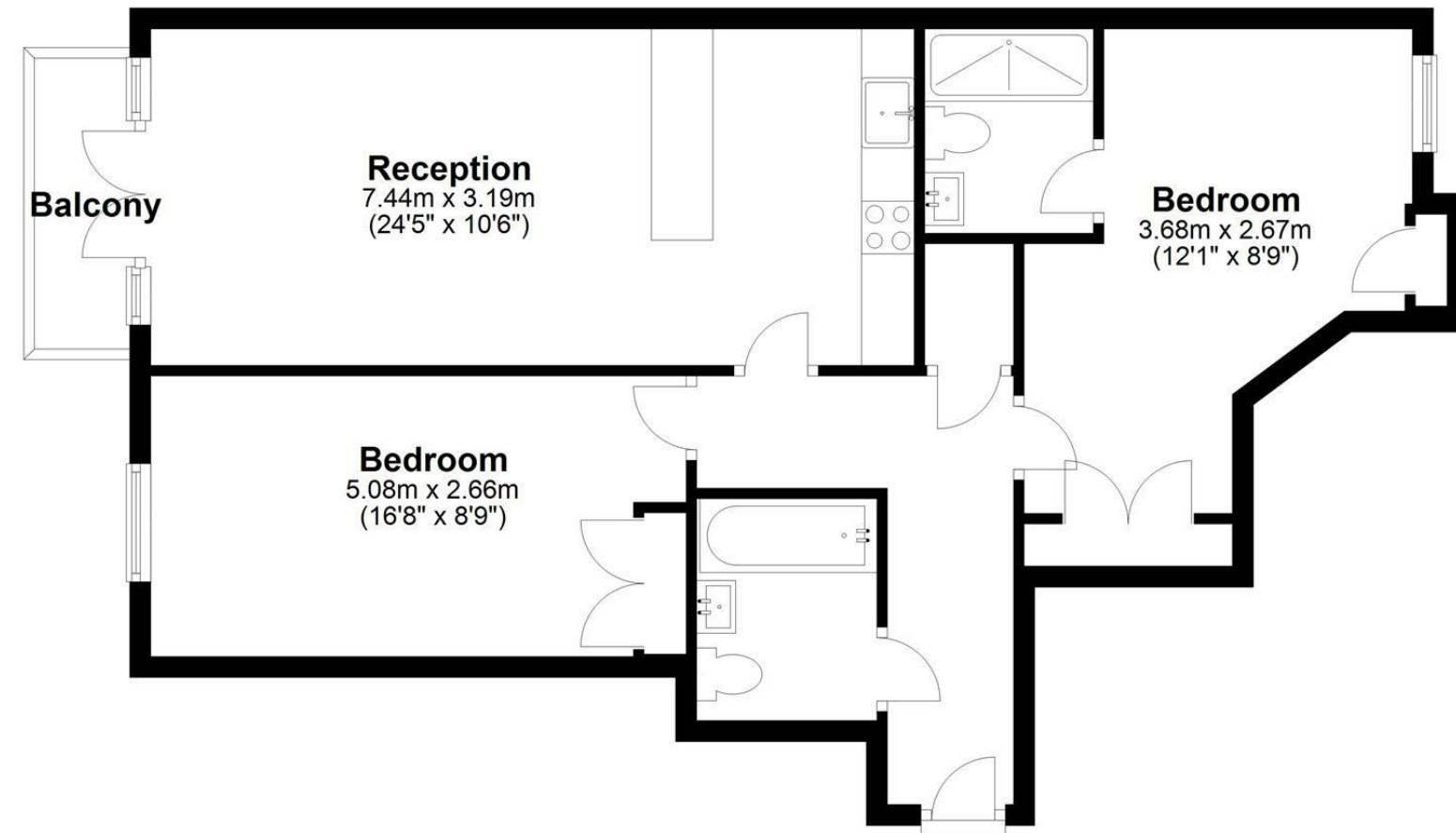
**£1,795 PCM**



**Description**

Cameron Estate Agents present this large two bedroom luxury apartment located within the popular Parkwest development boasting easy access to Heathrow Airport, West Drayton station and Stockley Business Park. The apartment showcases two double bedrooms, two bathrooms (one en-suite to the master rooms), a large reception room with open plan kitchen area and private balcony overlooking the maintained gardens. The development also offers a twenty four hour concierge service and residents gym. Available NOW and presented furnished.

**Third Floor**  
Approx. 67.9 sq. metres (731.3 sq. feet)



Total area: approx. 67.9 sq. metres (731.3 sq. feet)

**IMPORTANT NOTICE**

These particulars have been prepared upon information supplied by the Vendor and should be verified by your surveyors and solicitors. We have prepared these sales particulars as a general guide to give a broad description of the property. They are not intended to constitute part of an offer or contract. We have not carried out a structural survey and the services, appliances and specific fittings have not been tested. All photographs, measurements, floor plans and distances referred to are given as a guide only and should not be relied upon for the purchase of carpets or any other fixtures or fittings. Lease details service charge and ground rent (where applicable) are given as a guide only and should be checked and confirmed by your solicitor prior to exchange of contracts